



Fact sheet Villages of Tuscany

General information

Name of the village	VETULONIA Hamlet of Castiglione della Pescaia
Province	Grosseto
Tourist information	IAT CASTIGLIONE DELLA PESCAIA Piazza Giuseppe Garibaldi 6 58043 Castiglione della Pescaia Tel +39 0564 933678 Fax +39 0564 933954 iat@comune.castiglionedellapescaia.gr.it Website: https://visitcastiglionedellapescaia.it/iat/ PROLOCO VETULONIA Tourist office c/o Casa del Popolo 58043 Vetulonia, Castiglione della Pescaia Tel: +39 0564-1836085; +39 333-4442839; +39 392-5843948 Fax: +39 0564-23365 info@proloco-vetulonia.com Website: https://proloco-vetulonia.com/

Project carried out with the contribution of the





Notes	For people with reduced mobility, it is recommended to visit the village with an electric drive or with the help of a companion. The roads can in fact be bumpy and not always easily accessible, as it is a medieval village.
-------	--

TESTED BY: [Handy Superabile Social Promotion Association](#) in 2025

Please note: The following information refers to the date of verification shown at the bottom of each sheet. The Association is not responsible for any significant changes made by the property after the visit.

Table of Contents

General information	1
Description.....	3
How to reach Vetulonia.....	9
Parking	12
Route from the car park to the entrance	14
Description of the itinerary	15
Events.....	23
Accessible public places	34
Communal toilets	31
Medical practices/healthcare facilities.....	33

Project carried out with the contribution of the





Description

In the Municipality of Castiglione Della Pescaia there is Vetulonia, today a small village on the valley of the Bruna river that dominates the Grosseto plain. Vetulonia was one of the richest and most flourishing cities of northern Etruria, mentioned by the most important literary sources of antiquity. Dionysius of Halicarnassus, for example, names it together with Roselle, Volterra and Arezzo among the centers that helped the Latins against Tarquinius Priscus. Silius Italicus, on the other hand, reminds us that Vetulonia taught the symbols of power: the curule saddle, the fasces lictor, the toga with a purple band and the war bucina. Certainly founded in the Bronze Age, it was already inhabited in prehistoric times. Originally it consisted of two distinct nuclei that were unified in the seventh century BC, as suggested by the distribution of the pit tombs found in the surrounding area. The important monumental tombs in the area, along the Via dei Sepolcri, also date back to the seventh century BC. In the Via dei Sepolcri, not far from the historic center, there are the Tomb of the Belvedere, the Tomb of the Pietrera and finally the Tomb of the Diavolino II, while a little further on, getting closer and closer to the town, there are the remains of the excavations in the city.

Belvedere Tomb:

The first tomb you encounter, located on the left, is the Belvedere tomb, datable between the end of the seventh and sixth centuries BC. It is a quadrangular chamber structure with a short entrance dromos. The architrave is still preserved, while nothing remains of the underlying stone slab that closed the burial chamber. In the burial chamber there are small niches intended to accommodate the buried. The pseudo dome that covered the entire building has completely collapsed.





Photo source www.izitravel.it

Tomba Pietrera:

A few hundred meters away, on the right of the dirt road, there is the Tomb of the Stone. The tomb, which takes its name from the use perpetuated for centuries as a stone quarry, represents the largest funeral monument in Vetulonia. This is an anomalous case of two overlapping tombs: the first construction, the lower one with a circular burial chamber, built in the third quarter of the seventh century BC, collapsed during construction or soon after, perhaps due to the use of unsuitable material. Once the first tomb was filled, because it was no longer usable, the construction of a second one set above the first was undertaken in the last quarter of the seventh century BC, with a quadrangular chamber and access dromos, on the walls of which there were two small



Project promoted by



Regione Toscana

cells facing each other. The structure was covered by a pseudo dome supported by a central pillar that is still preserved; the whole was surmounted by a mound of earth.



Photo source www.izitravel.it

Tomb of the Diavolino II

Continuing along the Via dei Sepolcri, about 400 meters away is the tomb of the Diavolino 2, coeval with the Tomb of the Stone. The tomb of the Diavolino 1 was dismantled and rebuilt in the garden of the Archaeological Museum of Florence at the end of the 1800s. The burial chamber is quadrangular in shape with the pendentives at the corners on which the protruding slabs of the pseudo dome were grafted. The roof is preserved only in the lower part, the upper part is the work of restoration; The central pillar is also rebuilt, of

Project carried out with the contribution of the



Presidenza del
Consiglio dei Ministri
Ministro per la disabilità



which only the base in alberese stone is preserved. The burial chamber is accessed via a long dromos partly uncovered and with an architraved door.



Photo source www.izitravel.it

Excavations in the city

From 1893 to 1896 Isidoro Falchi, the discoverer of Vetulonia, brought to light in subsequent excavations a large portion of the Etruscan settlement dating back to between the third and mid-middle of the first century BC. The neighborhood was crossed by a paved street, the "via Decumana", flanked on the right side by warehouses and atrium houses (a room overlooked by the other rooms and which was accessed through an entrance flanked by two small rooms called fauces).

Project carried out with the contribution of the





On the other side of Via Decumana there are structures (tanks, wells, sewers) relating to the water system and water regulation of the district. Small transversal streets, "via dei Ciclopi" and "via Ripida", divide the town into blocks and head towards the top of the hill of Poggiarello Renzetti. Along the "Via Ripida" a domus with an atrium, called "Domus di Medea", has been brought to light (excavations 1985) where decorative terracottas have been found, illustrating the myth of Medea, exhibited at the Archaeological Museum of Vetulonia. At the end of the steep road, the excavations of another large house called "Domus dei Dolii" are still in progress.

A large room was intended for the storage of food reserves, kept in large jars (dolia) found still standing and perhaps (the part paved in stone) for the production of oil. The adjacent room C constituted the triclinium, where the lords found themselves eating meals lying on convivial beds (klinai) with marble furnishings, painted plaster on the walls and crushed earthenware flooring; room D could have constituted the atrium of the house, oriented with the entrance in the direction of Via dei Ciclopi.

The recovered material (III-I century BC) allows us to fix the date of destruction of the domus in the first decades of the first century BC.

The whole area was abandoned in the first century BC, following a fire of which traces remain, perhaps in conjunction with the reprisal actions carried out by Sulla against the Etruscan cities that had sided with Marius, after his victory in the Civil War.

In front of the entrance to the archaeological area of Scavi Città across the street are the remains of a large wall built with polygonal stone blocks, perhaps part of a boundary wall or a containment structure of the district above.





Photo source www.izitravel.it

Forgotten for centuries, the territory reappears in medieval documents with the name of Colonnata and later of Colonna di Burano.

In 1323 it passed under the control of Massa Marittima whose fate it followed by entering the orbit of Siena. The memory of the replacement of the ancient name has been lost for centuries, and in the 1800s a dispute arose between scholars over the exact location of the site.

Only thanks to archaeological excavations and the studies of the doctor Isidoro Falchi was the exact identification of the ancient Etruscan city established.

In the medieval period, Vetulonia soon entered the orbit of influence of the abbey of Sestinga, which was located one kilometer north of Vetulonia and represented a settlement of great importance, keeping its power intact until the mid-thirteenth century.

Project carried out with the contribution of the





In 1181 in an exchange between the Abbey of Fango and that of Sestinga the ancient name of Vitulonia appears.

In the thirteenth century the territory was disputed between the Abbey of Sestinga and the Lordship of the Lambardi of Buriano who, from the middle of the century, held the dominion of the castle.

In 1323 this territory was purchased by the Municipality of Massa Marittima which built a new fortification and later in 1332 after the war between Massa Marittima and Siena, Vetulonia passed under the direct dominion of the latter, following the fate of the Republic.

How to reach Vetulonia

By car	From the North
	<p>North-west: Motorway A 12 southbound, exit at Rosignano and proceed on the Livorno-Grosseto highway, exit at Follonica nord and then follow the signs for Vetulonia.</p> <p>North-east A1 motorway towards Florence Impruneta, take the Florence-Siena motorway junction and continue on the SS223 towards Grosseto, take the SS1 Aurelia northwards towards Livorno and exit at Guncarico. Follow the local signs and take the Sp 15 towards the village.</p>





	<p>From the South</p> <p>Take the A1 motorway towards Rome, take the Orte exit and take the SS675 motorway towards Viterbo, then SS 1 Aurelia.</p> <p>Recommended exit is Grosseto Sud to follow the signs towards the sea on the SS322 and for Vetulonia</p>
By plane	<p>The nearest airport to reach Scarlino:</p> <ul style="list-style-type: none"> • Pisa "Galileo Galilei" Airport, located about 140 km from Venice.
Assistance service for people with disabilities	Yes
Embarkation/disembarkation of passengers with reduced mobility	With courtesy chair and ambulift/finger
Tactile paths for the blind and visually impaired	Yes
There is a toilet room accessible with grab handles	Yes
By train	
Nearest station	The local railway station for Vetulonia is Grosseto.





<p>Assistance service for people with disabilities</p>	<p>The Grosseto station is enabled for the assistance service for people with disabilities and reduced mobility (PRM), while the Talamone station is not enabled. To use the service, it is necessary to contact the Italian Railway Network through the relevant Blue Room, at the following addresses:</p> <ul style="list-style-type: none"> • toll-free number: 800 90 60 60 (from a landline) • National number: 02 32 32 32 (from a landline or mobile) <p>The service provides information on the nearest enabled station and allows assistance to be booked.</p>
<p>Blue Hall Reference</p>	<p>Florence</p>
<p>There is a toilet room in the station accessible with grab handles</p>	<p>Yes</p>
<p>By public and private transport</p>	
<p>Nearest bus stop</p>	<p>The public transport service is operated by Autolinee Toscane, which offers connections from Grosseto to Scarlino. The bus station in Follonica is located in front of the Piazzale della Stazione.</p>





	For further details, please refer to the website (www.at-bus.it)
Presence of adapted buses with ramp	it is advisable to check the availability of the service in advance by contacting Autolinee Toscane. Contact details: toll-free number: +39 800142424 or +39 05551351

Parking

Public parking nearby	YES along Via Garibaldi and in Piazza Vatluna (in front of the Isidoro Falchi Museum)
Type of public parking floor	Asphalt
Presence of parking space reserved for people with disabilities	YES, 2 stalls 1 Piazza Stefani 1 Vatluna Square (in front of the Isidoro Falchi Museum)
Type of parking lot reserved for people with disabilities	Asphalt



Project promoted by



Regione Toscana



1 Entrance to the Vatluna Square car park



2 Vatluna Square Public Parking



3 Reserved parking Vatluna Square



4 Piazza Stefani Public Parking

Project carried out with the contribution of the



**Presidenza del
Consiglio dei Ministri**
Ministro per la disabilità

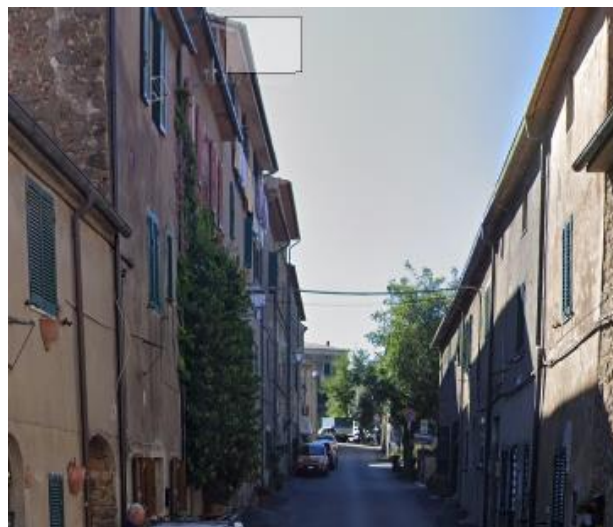


Pathway from the car park to the entrance

Pathway from the car park to the starting point	Obstacle-free with no major slopes or steps
Distance from parking to entrance	Variable from 50 to 500 meters
Type of trail surface	On asphalt
There are indicators and tactile maps	No



5 Route from the parking lot of Piazza Vatluna to Piazza Stefani - first stretch



6 Route from the parking lot of Piazza Vatluna to Piazza Stefani - last stretch





Description of the itinerary



Length	About 450 meters
Along the itinerary there are maps and tactile signs for the blind	NO

Project carried out with the contribution of the





Before reaching the starting point of the itinerary, we recommend a stop at the Isidoro Falchi Archaeological Museum located in Piazza Vatluna. By car you can go directly to the car park. The Archaeological Museum opened in 2000 and is dedicated to the doctor Isidoro Falchi, an eclectic scholar who in the 1800s dedicated his entire life to discovering ancient Vetulonia. In the 7 rooms of the Museum are preserved large quantities of artifacts from the surrounding area. Numerous artifacts are preserved in the museum. The exhibition rooms show funerary objects, crockery, silver and gold objects, ossuaries, bronze fibulae, a button, a Sardinian bronze pendant, dough spindles, bronze razors, bronze bits, tie rods and harnesses for horses, spear tips, arrowheads, dough tankards, bowls, spools, bicocon vases and cinerary urns. The finds on display in the rooms date back to the Villanovan age (IX – VIII century BC), the Orientalizing age (end of the VIII VII century BC) and the Roman Hellenistic age.

Information and contacts

MuVet – Civic Archaeological Museum "Isidoro Falchi" Piazza Vetluna - Vetulonia (GR)

Tel: +39 0564 927245,

E-mail: museo.vetulonia@comune.castiglionedellapescaia.gr.it

During your visit to the Museum you can use, directly on your smartphone, a platform of free audio guides on which to find the contents (photos, texts and small audios). Izi.travel is also an App that can be downloaded in advance (from Playstore or Apple Store) or also viewed from the website at the following links: Museum:

<https://izi.travel/it/aa0d-museo-civico-archeologico-isidoro-falchi/it>

The Museum is equipped with Wi-Fi.





Accessibility:

The pavement of the square is asphalt and flat.

The main entrance to the Museum can be reached via 4 steps that can be overcome via two L-shaped ramps, interrupted by a resting shelf, measuring 113 X 118 cm.

The first ramp is 150 cm long and 128 cm wide, with a slope of 12%, and handrails on both sides, the second ramp, in succession, 920 cm long and 118 cm wide with a slope of 5% and handrail on the right.

There are natural tactile orientation signs (handrails and wall on the side of the ramps) that lead up to the entrance. The 2-leaf door opens outwards and has a clear opening of more than 90 cm.

The 7 rooms on 2 floors can be reached by lift, with a useful width of the car door of 86 cm, internal dimensions of the car: width of 137 cm x depth 150 cm and push-button panel with the highest button placed 95 cm from the ground.



7 Parking entrance Vatluna Square



8 Entrance ramps to the Museum

Project carried out with the contribution of the



Project promoted by



Regione Toscana



9 objects exhibited at the Museum



10 jewels on display at the Museum



11 Etruscan find

izi. TRAVEL
the storytelling platform

12 izi travel App logo

Project carried out with the contribution of the



Presidenza del
Consiglio dei Ministri
Ministro per la disabilità



Leaving the Museum, continue along Via Garibaldi and follow it for about 150 meters until you reach Piazza Stefani where our itinerary begins.

After crossing the square, turn left following the signs that lead us towards the Etruscan Cyclopean walls and walk along a stretch on paving in stone blocks.

The suggestive path continues until you reach a small square located on the left side of the road. Here we find the Church of Saints Simon and Jude. The church is remembered since the eleventh century as a property of the Abbey of San Bartolomeo di Sestinga and in the thirteenth century as dependent on the parish of Burano. The plaque, placed on the right side of the façade, attests that in 1334 it was elevated to a parish church. The façade was raised during an intervention in the early twentieth century.

The bell tower dates back to 1334. The church is presented in drafts of scaled stone and is the result of a renovation that took place in the early twentieth century.

Even the internal building is the result of subsequent alterations that have almost erased the Romanesque structure.

The single-nave interior with a gabled roof does not present any noteworthy works.

Accessibility:

Piazza Stefani: the pavement is made of stone blocks.

The Church of Saints Simon and Jude is not accessible as it has two external steps with a height of 20 cm, and an internal one with a height of 6 cm. Through a ramp located on the left side with a length of 270 cm, width 240 cm and a slope of 7%, you can reach the entrance portal and admire the Romanesque façade.



Project promoted by



Regione Toscana



13 entrance Piazza Stefani



14 Beginning of the route for Cyclopean walls



15 characteristic alley



16 entrance to the church of S. Simone e Giuda

Project carried out with the contribution of the



**Presidenza del
Consiglio dei Ministri**
Ministro per la disabilità



17 external façade of the church



18 central altar

From Piazza della Chiesa you continue forward, crossing a series of arches that rest on the side buildings and on a pavement of stone blocks.

Beyond the last arch we arrive at a widening with asphalt paving, where on the left side we find a stone house with side stairs.

Turning left you can admire the imposing ruins of the ancient Etruscan city walls which have large polygonal stone blocks, dating back to the sixth / fifth century BC

The Etruscan walls were built with large blocks of local stone, often positioned dry and in regular rows. They were very imposing structures and had a defensive and strategic function as they surrounded the settlement and gave the urban space a scenographic and imposing appearance.

Next to the Etruscan walls we find the Oratory of Santa Maria delle Grazie on the right side. The building, much remodeled, is presented in very simple architectural forms with a gabled façade, whose portal is surmounted by a window with a shaped frame. The entrance door has steps that cannot be overcome with any precaution.

Project carried out with the contribution of the





The church is divided into a hall interior with vaulted roofs. The main altar, made of plaster according to generically eighteenth-century stylistic features, frames the fresco with the Madonna and Child between Saints Fabiano and Sebastiano, a painting dating back to the late fifteenth century and completely repainted in 1909 by G. Casucci at the behest of Teresa Guidi, as the plaque next to it, on the left, informs us.

From the Oratory, skirting the Etruscan cyclopean walls, continue ahead and turn left again to admire the mighty fortification of the castle of Vetulonia, still present today and clearly visible. The fortification today has incorporated most of the houses and has a scarp base.

Fortifications with a scarp base entered the normal use of architecture, around the fourteenth century. This is a structural feature that was designed to support the structure itself and to strengthen the defense.

Next to the walls is also clearly visible the large severed tower with a square plan, built in 1323 when the territory of Vetulonia was purchased by that of Massa Marittima which built a new fortification.

Accessibility

The route from Piazza Stefani to the last arch of the street, located approximately at the height of Via San Guglielmo 11, has a gradient ranging from 5.65% to 15%.



Project promoted by



Regione Toscana



19 alley with arches



20 characteristic alley with arch



21 last stretch of the alley



22 Entrance to the Cyclopean Walls area

Project carried out with the contribution of the



Presidenza del
Consiglio dei Ministri
Ministro per la disabilità

Project promoted by



Regione Toscana



23 Etruscan Cyclopean Walls



24 Façade of the Santa Maria delle Grazie oratory



*25 central altar and interiors of the Oratory of Santa
Maria of graces*



26 last stretch Cyclopean walls

Project carried out with the contribution of the



Presidenza del
Consiglio dei Ministri
Ministro per la disabilità



27 Medieval fortification



28 Square tower

Additional information

From the center of Vetulonia, continuing along the return road, in Strada vicinale Badia Vecchia – Casette, about 800 meters on the right are the excavations in the city.

Continuing about 2 km, you will find a crossroads. From the junction to visit the Etruscan tombs, turn towards Buriano Grosseto, until you find a second junction where you need to take the dirt road to the left.

From here begins the archaeological area where you can visit the Etruscan tombs located on the famous Via dei Sepolcri.

The beginning of the archaeological area is indicated by a yellow sign, placed in the center of the crossroads.

The map included in the report shows the route to follow through the blue track. Once you enter the dirt road, the Belvedere Tomb and the entrance to the Tomb of the Stone, unlike the Tomb of the Diavolino, are also visible from the outside.

Project carried out with the contribution of the



Project promoted by



Regione Toscana

Accessibility:

The Excavations area in the city is partially accessible only at the entrance and with a companion.

It is advisable to visit the Via dei Sepolcri by car.



29 entrance Excavations in the city



30 junction for Via dei Sepolcri – archaeological area

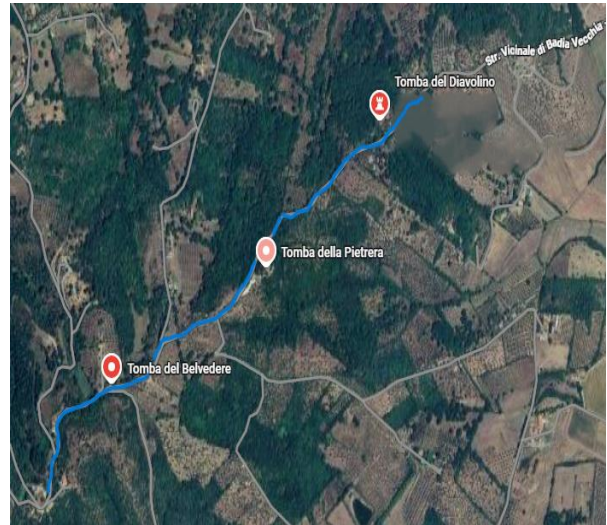
Project carried out with the contribution of the



Presidenza del
Consiglio dei Ministri
Ministro per la disabilità



31 entrance via dei Sepolcri



32 Route to visit the tombs

Events

The main events in Vetulonia include summer festivals and cultural festivals, the most important are:

- **The Nights of Archaeology** : This is the highlight event, organized by the Isidori Falchi Civic Archaeological Museum and takes place in the summer months. They offer book presentations, lectures and evening guided tours of the collections and sites
- **Pork Festival**: A great culinary festival dedicated to the pig, which usually animates the town for several weekends during the month of August with food stands and live music.

Project carried out with the contribution of the



Project promoted by



Regione Toscana



33 Poster the nights of archaeology



34 Archaeology Nights Outdoor Conference

Accessible public places

In the village of Vetulonia, the following public places with accessibility characteristics have been detected:

- **The Terrace of the Etruscans – accessible toilets not detected. At the time of the check, the place was closed**
- **The old cellar - accessible toilets not detected. At the time of the check, the place was closed**

See tabs with details below:

Project carried out with the contribution of the



Presidenza del
Consiglio dei Ministri
Ministro per la disabilità



LOCAL	
Room type and name	The Old Cellar of Vetulonia
Location	Via Garibaldi 42 – Vetulonia (GR)
Door type	2-door internal opening
Local access mode	Via step about 10 cm
Types of tables	4 legs
TOILETS	
There is an accessible toilet	Not detected at the time of verification

LOCAL	
Room type and name	The Terrace of the Etruscans
Location	Piazza Stefani 12 – Vetulonia (GR)
Door type	2-door internal opening
Local access mode	Via step about 10 cm
Types of tables	4 legs
TOILETS	
There is an accessible toilet	Not detected at the time of verification



Project promoted by



Regione Toscana



35 entrance The old cellar



36 indoor restaurant tables

Project carried out with the contribution of the



**Presidenza del
Consiglio dei Ministri**
Ministro per la disabilità



37 Entrance to the restaurant La Terrazza degli Etruschi

Communal toilets

There is an accessible toilet	Yes, 1
Location of the toilet room	Isidoro Falchi Archaeological Museum
How to access the premises	Flat
Toilet height	47 cm
Toilet seat with open front tooth	Yes
Support handles	YES, fixed and reclining
Flexible shower on the side of the toilet	NO
Free space on the sides of the toilet	On the right over 100 cm Front over 100 cm Left 26 cm

Project carried out with the contribution of the



Project promoted by



Regione Toscana

Electric doorbell/telephone on the side of the toilet	Roped
Washbasin with space underneath for wheelchair approach	75 cm
Height from the ground lower edge mirror	85 cm
Baby changing table	No



38 toilets and grab bars



39 washbasin and reclining mirror

Project carried out with the contribution of the



Presidenza del
Consiglio dei Ministri
Ministro per la disabilità



Medical practices/healthcare facilities

Hospitals near the property	Misericordia Hospital Via Senese 161 58100 Grosseto Tel +39 0564 485111
Dialysis facilities	Dialysis service present. It is activated at the request of the interested party. For organisational reasons, information and requests should preferably be requested well in advance at the following addresses: Grosseto provincial area MISERICORDIA HOSPITAL IN GROSSETO Nephrology and Dialysis Unit Tel.+39 0564 485.218 from Monday to Friday, hours 09.00-12.00/15.00-19.00 Papi Alberto - Hemodialysis Nursing Coordinator. Tel. +39 0564 485159 - alberto.papi@uslsudest.toscana.it





	<p>Clinical manager: Dr. Paolo Conti mobile +39 335 7207316 - paolo.conti@uslsudest.toscana.it</p> <p>Nursing Manager for Grosseto: Dr. Lorenzo Baragatti - lorenzo.baragatti@uslsudest.toscana.it</p>
Other healthcare facilities	<p>Asl Presidio di Castiglione Della Pescaia 58043 – Via Roma 1- 58043 – Tel +39 0564 483076 Tuesday and Friday from 9.30 a.m. to 12.00 p.m.</p> <p>Red Cross Square Orsini 11 - 58043 Castiglione Della Pescaia Tel +39 0564 933050 Email: castiglionedellapescaia@cri.it Pec cl.castiglionedellapescaia@cert.cri.it</p>
Pharmacies	<p>Laura Lorenzi Municipal Pharmacy, Via Ansedonia 47 - 58043 - Castiglione Della Pescaia Tel +39 0564937176</p>

TESTED BY: [Handy Superabile Social Promotion Association](#) in 2025

Project carried out with the contribution of the

